



Customer: **Bees Knees CBDs**
 Customer Sample ID: **600mg Pet Tincture**
 Laboratory Number: **20F0240-02**

Density: **0.9358**



Cannabinoid Profile

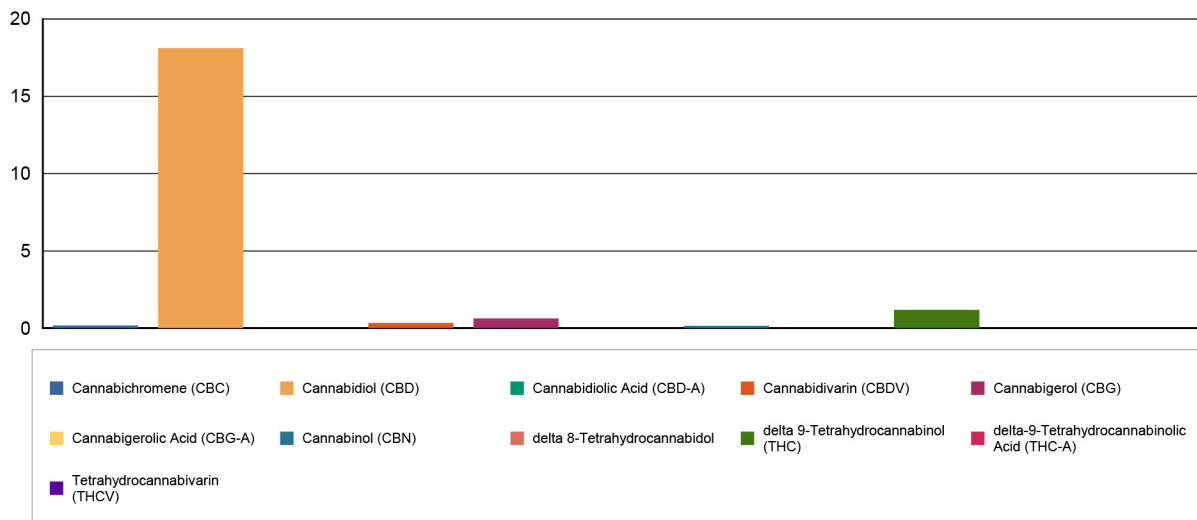
Extraction Technician: DF
 Analytical Chemist: CB

Extraction Date(s)	Analysis Date(s)
6/23/2020	6/23/2020

Cannabinoids (HPLC)	Results		
	LOD (mg/mL)	%	mg/mL
Cannabidiol (CBD)		1.81	18.1
delta 9-Tetrahydrocannabinol (THC)		0.12	1.19
Cannabigerol (CBG)		0.06	0.620
Cannabidiol (CBD)		1.81	18.1
Tetrahydrocannabivarin (THCV)	<0.090		
Cannabinol (CBN)		0.02	0.165
delta 9-Tetrahydrocannabinol (THC)		0.12	1.19
delta 8-Tetrahydrocannabinol	<0.090		
Cannabichromene (CBC)		0.02	0.186
delta-9-Tetrahydrocannabinolic Acid (THC-A)	<0.090		
Cannabinoids Total		%	mg/mL
Max Active THC		0.12	1.19
Max Active CBD		1.81	18.10
T.Active Cannabinoids		2.03	20.30
Total Cannabinoids		2.06	20.60

Following USDA guidelines on uncertainty, Altitude Consulting's uncertainty are calculated for CBDa and CBD at +/- 4%. The uncertainty for THCa and THC are +/- 5%. This implies the range for a 10% value of CBD to be 9.6-10.4%. The uncertainty range for a 0.30% value of THC would be 0.28-0.32%.

Cannabinoid (mg/mL)



Reporting Limits will vary based on sample extraction weight used for the analysis.

Altitude Consulting, LLC utilizes NIST traceable Reference Standards and Certified Reference Material to calibrate analytical instruments along with proven analytical methods. The methods are applied in the most ethical manner following good laboratory practice guidelines. The results of this report are based solely on the sample submitted and cannot be reproduced.